

LMR25

單軸
1-axis

軸棒線馬

Linear shaft motor



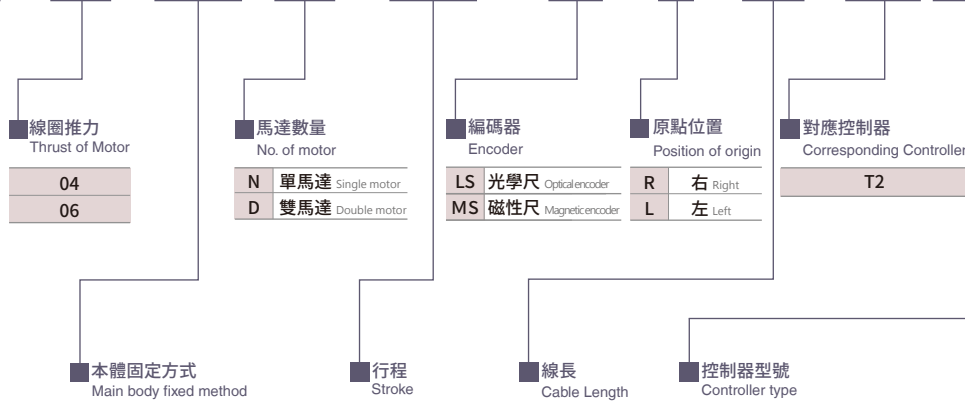
最大行程 Maximum Stroke	1300mm	最高速度 Maximum Speed	2500mm/s	連續推力 Continuous thrust	96N
連續可搬重量 Continuous Payload	24kg	磁棒外徑 Maximum Stroke	φ25mm	直線滑軌 Linear Guide	42mmX9.5mm- 1 pcs

型號表示方式 Ordering Method

LMR25 - 04 - RH - N - 1300 - LS - R - 05 - T2 41L - A001

本體型號
Model

特注式樣
Customization Order No.



RH	本體水平固定	Horizontally fixed
LW	本體壁掛固定	Wall mounting

50	50mm
?	?
1300	1300mm

※60mm間距。
※ Pitch: 60mm.

05	5m
08	8m
12	12m

標配5m。
Standard:5m.

容量 Capacity	電壓 Voltage
4	400W
1	單相220V Single-phase 220V
3	三相220V Three phase 220V

功能 Function	
L	標準型 Standard type(pulse)
F	DMCNET
U	電子凸輪 ECAM
M	CANopen

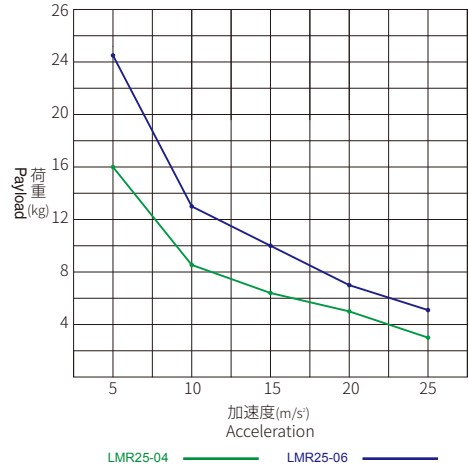
免費服務專線：大陸 400-875-0009 台灣 0800-800-893
Toll-Free Number China Taiwan

基本仕様 Specification

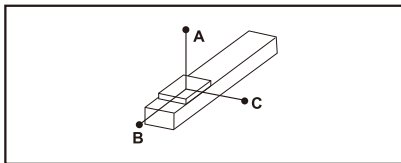
規格 Spec	型號 Model	LMR25-04	LM25-06
	位置重複精度 Repeatability (mm)	±0.002mm	
	最大推力 Max. thrust (N)	257	386
	連續推力 Continuous thrust (N)	64	96
	連續可搬重量 Continuous Payload (kg)	16	24
標準行程 Stroke / Pitch (mm)	單馬達 N	100-1300mm / 60間隔	120-1260mm / 60間隔
	雙馬達 D	70-1090mm / 60間隔	50-1010mm / 60間隔
最高速度 Maximum Speed (mm/s) ※1	2500mm/s		
部品 Parts	定子外徑 Outer dia. Of stator	φ 25	
	光學尺廠牌 Brand of linear scale	RENISHAW	
	讀頭 Reader	RH200X05A00A	
	Z相原點 Origin of Z phase	A-9541-0037	
	光學尺解析度 Resolution of linear scale	0.001mm	

※1 連續可搬重量為到達線速度1m/s,最大加速度5m/s²固定行程來回,不同情況會有不同。
The continuous payload is the data when the robot runs with maximum speed 1m/s and acceleration 5m/s². Different application will have different result.

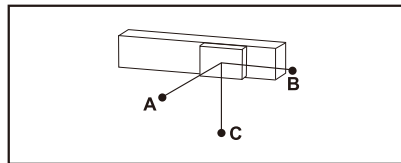
加速度-連續可搬重量 Acceleration-Continuous Payload



容許負載力距表 Allowable Moment



(單位 Unit:mm)



(單位 Unit:mm)

水平安裝 Horizontal Installation ※2

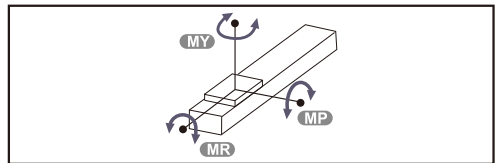
速度 Speed (m/s)	荷重 Load (kg)	容許負載力距 (mm)			
		A	B	C	
LMR 25 - 04 - RH	1	16	550	151	92
	1	8	1155	333	204
	1.5	8.8	435	210	116
	1.5	4.5	890	440	245
	2	5.3	385	283	138
	2	2.5	850	635	310
	2.5	3.4	460	460	198
2.5	1.5	1070	1080	465	
LMR 25 - 06 - RH	1	24.5	440	114	54
	1	12	980	276	132
	1.5	13.7	345	160	72
	1.5	6.5	790	385	170
	2	8.4	305	218	88
	2	4	680	505	202
	2.5	5.6	350	350	127
2.5	3	685	685	250	

壁掛安裝 Wall Installation ※2

速度 Speed (m/s)	荷重 Load (kg)	容許負載力距 (mm)			
		A	B	C	
LMR 25 - 04 - LW	1	16	92	150	550
	1	8	204	333	1155
	1.5	8.8	116	210	435
	1.5	4.5	246	440	890
	2	5.3	138	284	385
	2	2.5	310	635	850
	2.5	3.4	198	455	458
2.5	1.5	465	1080	1070	
LMR 25 - 06 - LW	1	24.5	54	114	440
	1	12	132	275	990
	1.5	13.7	72	160	345
	1.5	7	158	355	730
	2	8.4	88	218	305
	2	4	204	505	680
	2.5	5.6	126	350	350
2.5	3	250	685	685	

※2 相同速度下加速度時間不同, 加速度也隨之變化, 荷重也隨之改變, 表為加速度時間0.2s。
Even the speed is same, if acceleration and acceleration time is changed, the payload will be different. Above chart is based on acceleration time 0.2 sec.

靜態容許負載慣量 Static Loading moment



(單位 Unit:N.m)

型號 Model	MY (N.m)	MP (N.m)	MR (N.m)
LMR 25 - 04	112	112	74
	147	147	74
	147	147	74

對應控制器一覽表 Corresponding Controller Chart

外觀 Exterior	控制器型號 Controller Model	選配介面 Control Mode	電氣規格 Electrical Spec.	詳細參閱 Reference Page
	T2	標準型 Pulse Control Mode	單相或三相220V Single-phase 220V or Three phase 220V	P.33
		DMCNET		
		電子凸輪 ECAM		
		CANopen		

LMR25

單軸
1-axis

軸棒線馬

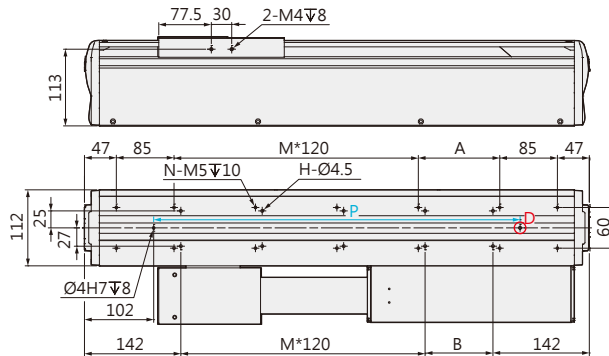
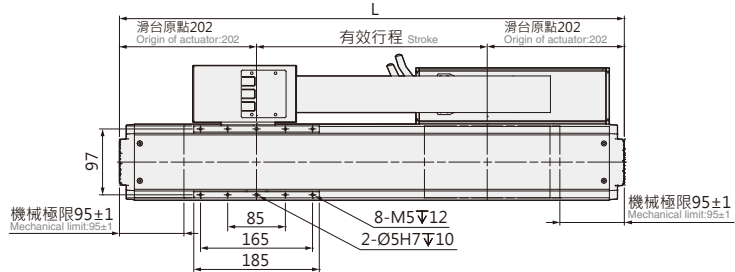
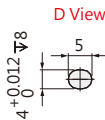
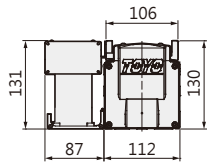
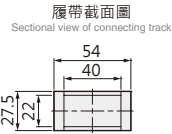
Linear shaft motor

LMR25-04-RH-N



CAD圖面可至www.toyorobot.com下載
Please download the CAD file from TOYO's website: www.toyorobot.com

單位 Unit : mm



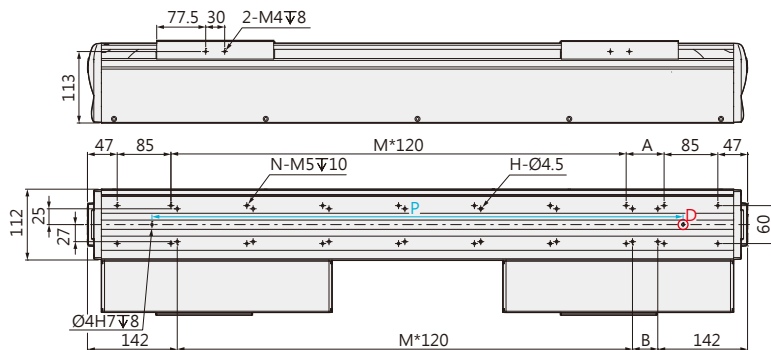
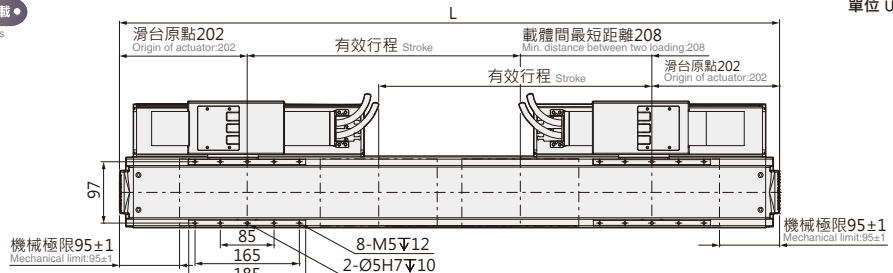
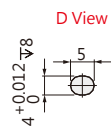
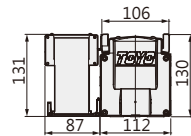
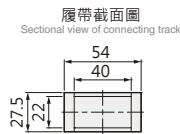
有效行程 stroke	100	160	220	280	340	400	460	520	580	640	700	760	820	880	940	1000	1060	1120	1180	1240	1300
L	504	564	624	684	744	804	864	924	984	1044	1104	1164	1224	1284	1344	1404	1464	1524	1584	1644	1704
A	120	60	120	60	120	60	120	60	120	60	120	60	120	60	120	60	120	60	120	60	120
B	100	40	100	40	100	40	100	40	100	40	100	40	100	40	100	40	100	40	100	40	100
P	300	360	420	480	540	600	660	720	780	840	900	960	1020	1080	1140	1200	1260	1320	1380	1440	1500
M	1	2	3	4	4	4	4	5	5	6	6	7	7	8	8	9	9	10	10	11	11
N	10	12	12	14	14	16	16	18	18	20	20	22	22	24	24	26	26	28	28	30	30
H	6	8	8	10	10	12	12	14	14	16	16	18	18	20	20	22	22	24	24	26	26
KG	11.6	12.5	13.5	14.5	15.4	16.4	17.3	18.3	19.3	20.2	21.2	22.1	23.1	24.1	25	26	27	27.9	28.9	29.8	30.8

LMR25-04-RH-D



CAD圖面可至www.toyorobot.com下載
Please download the CAD file from TOYO's website: www.toyorobot.com

單位 Unit : mm



有效行程 stroke	70	130	190	250	310	370	430	490	550	610	670	730	790	850	910	970	1030	1090
L	684	744	804	864	924	984	1044	1104	1164	1224	1284	1344	1404	1464	1524	1584	1644	1704
A	60	120	60	120	60	120	60	120	60	120	60	120	60	120	60	120	60	120
B	40	100	40	100	40	100	40	100	40	100	40	100	40	100	40	100	40	100
P	480	540	600	660	720	780	840	900	960	1020	1080	1140	1200	1260	1320	1380	1440	1500
M	3	3	4	4	5	5	6	6	7	7	8	8	9	9	10	10	11	11
N	14	14	16	16	18	18	20	20	22	22	24	24	26	26	28	28	30	30
H	10	10	12	12	14	14	16	16	18	18	20	20	22	22	24	24	26	26
KG	20	20.9	21.9	22.8	23.8	24.8	25.7	26.7	27.6	28.6	29.6	30.5	31.5	32.4	33.4	34.4	35.3	36.3

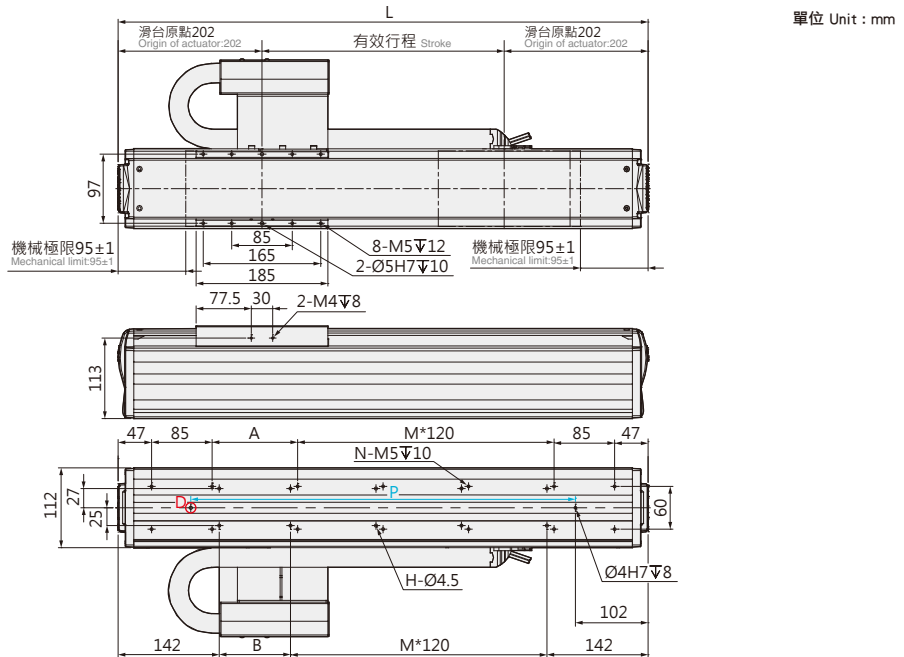
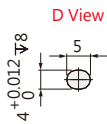
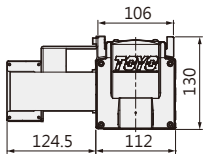
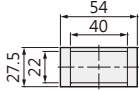
免費服務專線：大陸 400-875-0009 台灣 0800-800-893
Toll-free Number China Taiwan

LMR25-04-LW-N



CAD圖面可至www.toyorobot.com下載
Please download the CAD file from TOYO's website: www.toyorobot.com

履帶截面圖
Sectional view of connecting track



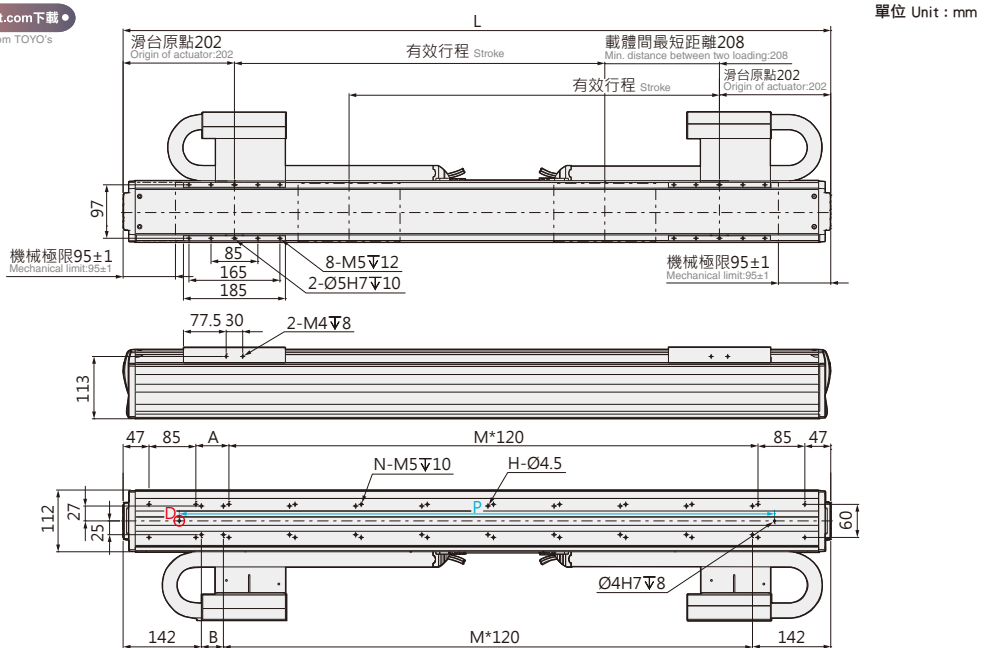
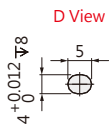
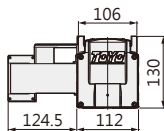
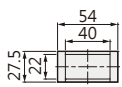
有效行程 stroke	100	160	220	280	340	400	460	520	580	640	700	760	820	880	940	1000	1060	1120	1180	1240	1300
L	504	564	624	684	744	804	864	924	984	1044	1104	1164	1224	1284	1344	1404	1464	1524	1584	1644	1704
A	120	60	120	60	120	60	120	60	120	60	120	60	120	60	120	60	120	60	120	60	120
B	100	40	100	40	100	40	100	40	100	40	100	40	100	40	100	40	100	40	100	40	100
P	300	360	420	480	540	600	660	720	780	840	900	960	1020	1080	1140	1200	1260	1320	1380	1440	1500
M	1	2	2	3	3	4	4	5	5	6	6	7	7	8	8	9	9	10	10	11	11
N	10	12	12	14	14	16	16	18	18	20	20	22	22	24	24	26	26	28	28	30	30
H	6	8	8	10	10	12	12	14	14	16	16	18	18	20	20	22	22	24	24	26	26
KG	11.8	12.7	13.6	14.5	15.4	16.3	17.2	18.1	19	20	20.9	21.8	22.7	23.6	24.5	25.4	26.3	27.2	28.1	29	30

LMR25-04-LW-D



CAD圖面可至www.toyorobot.com下載
Please download the CAD file from TOYO's website: www.toyorobot.com

履帶截面圖
Sectional view of connecting track



有效行程 stroke	70	130	190	250	310	370	430	490	550	610	670	730	790	850	910	970	1030	1090
L	684	744	804	864	924	984	1044	1104	1164	1224	1284	1344	1404	1464	1524	1584	1644	1704
A	60	120	60	120	60	120	60	120	60	120	60	120	60	120	60	120	60	120
B	40	100	40	100	40	100	40	100	40	100	40	100	40	100	40	100	40	100
P	480	540	600	660	720	780	840	900	960	1020	1080	1140	1200	1260	1320	1380	1440	1500
M	3	3	4	4	5	5	6	6	7	7	8	8	9	9	10	10	11	11
N	14	14	16	16	18	18	20	20	22	22	24	24	26	26	28	28	30	30
H	10	10	12	12	14	14	16	16	18	18	20	20	22	22	24	24	26	26
KG	20	20.8	21.7	22.6	23.5	24.4	25.2	26.1	27	27.9	28.8	29.6	30.5	31.4	32.3	33.2	34	34.9